



POTTERY  
GROVE

• DEAL •

Quinn  
Homes



# A Gem of Coast and Country

Deal is where you want to be with a stunning coastline on one side and Kent's rolling fields on the other. Excellent transport links from HS1, where trains take just 1 hour and 21 minutes to reach London St Pancras.

At Pottery Grove, an exquisite collection of stylish homes, you are well catered for by a town with an award-winning high street and excellent transport links.

With a selection of 2 and 3 bedroom homes, each with a contemporary finish, it is time to make Deal your new home for an exceptional lifestyle.



*“My experience of Quinn Homes has been first class, I had superb service from start to finish from everybody involved. Everyone is impressed by the quality of finish... I love my new home!”*

Ms Kerrison

The Beer Cart Building, Canterbury





Indicative Street Scene at Pottery Grove

# Deal

## Full of Life

---

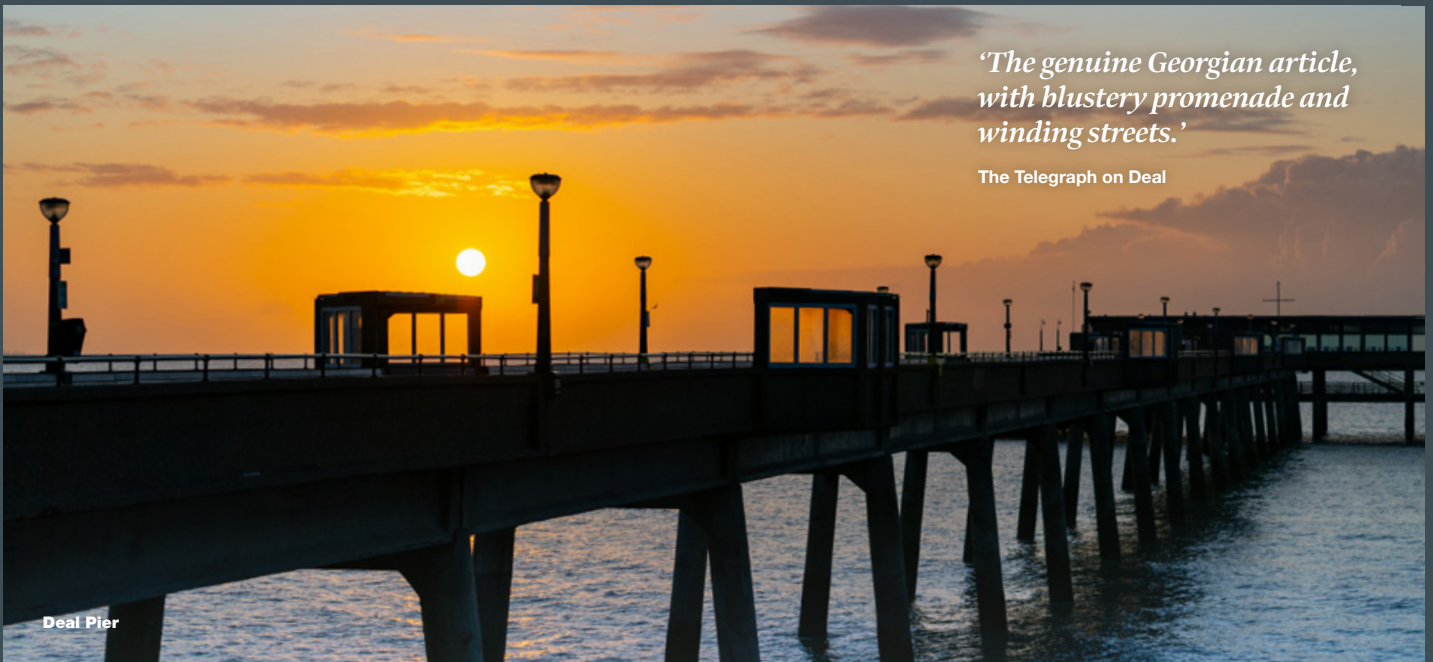
**Deal is regarded as one of Kent's most vibrant seaside towns with many choosing to embrace the lifestyle it has to offer.**

With the high street voted as Britain's best by The Telegraph, the varied mix of restaurants and quirky retail outlets, Deal has a rarely found character.

Deal is home to two of the country's finest castles and major tourist attractions with Deal Castle, built by Henry VIII and Walmer Castle. The latter also boasts a sensational gardens complex looking out onto the English Channel.

*'The genuine Georgian article, with blustery promenade and winding streets.'*

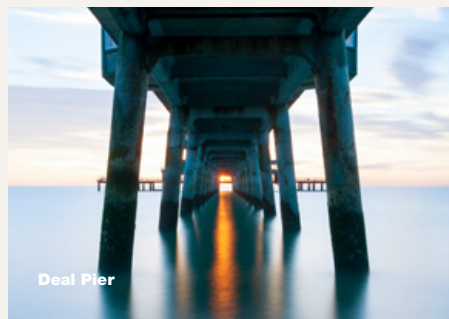
The Telegraph on Deal



Deal Pier

---

Off the coast lies the Goodwin Sands, notorious for the sinking of hundreds of vessels over the centuries and now home to a colony of seals. The waters off Deal separate the English Channel from the North Sea and history has provided exceptional tales of smuggling, shipwrecks and invasion.



## Deal Awards

The Telegraph voted Deal first in the '10 top spots to lay your beach towel'

'Best Places to Live'  
- The Sunday Times

'Top 30 places to live by the sea'  
- The Sunday Times

'Top Hipster Holiday'  
- Evening Standard

'High Street of the Year'  
- The Daily Telegraph



Betteshanger Park

# Out & About

---

**Whatever your age or interests,  
Deal has everything to offer.**

Betteshanger Park is an exciting addition to the town providing outdoor activities, year-round events and a range of cultural opportunities. With excellent connectivity to the town and surrounding area, the park is an exceptional place for all the family and is located just 3 miles from Pottery Grove.





---

The Dover district has an abundance of outstanding schools including Dover Grammar School For Boys and the Ofsted Outstanding schools of Dover Grammar School For Girls and Sir Roger Manwood's in Sandwich. In addition, Deal has a range of primary schools and prep schools including Northbourne Park.

Deal has a leisure centre, tennis clubs, internationally renowned golf courses and with Deal & Betteshanger Rugby Club and Deal Football Club, opportunities exist for sporting excellence for all age groups.



# Quinn Homes

---

**Quinn Homes are one of Kent's leading developers of outstanding new homes.**

With 25 years experience, Quinn Homes have consistently delivered exemplary projects across the county.

As part of our ethos, we support the communities in which we develop, funding local projects and providing new facilities.





*“I purchased my apartment some ten years ago. I was hugely impressed by the care and expertise that went into the design process. The finishings were superb, the standard of workmanship was of the highest order and the after sales service, outstanding. Quinn Homes have simultaneously created a wonderful family home and an exceptional investment.”*

Mr Rawlings  
Woodend, Hythe

Each new home is built to exacting standards and signed off by a director of Quinn Homes to ensure that the pride our experienced and professional team have is reflected in all we do.

Quinn Homes are committed to industry leading levels of aftercare backed by a 12 month snagging warranty demonstrating our commitment to you and your new home.



Kent **Design & Development** Awards 2018

Winner  
2018



Won Gold for Best Luxury House 2018

Property Awards 2020

Shortlisted in Property Week Awards 2020 for Developer of the Year



Shortlisted in the RESI awards 2020 for Small Developer of the Year

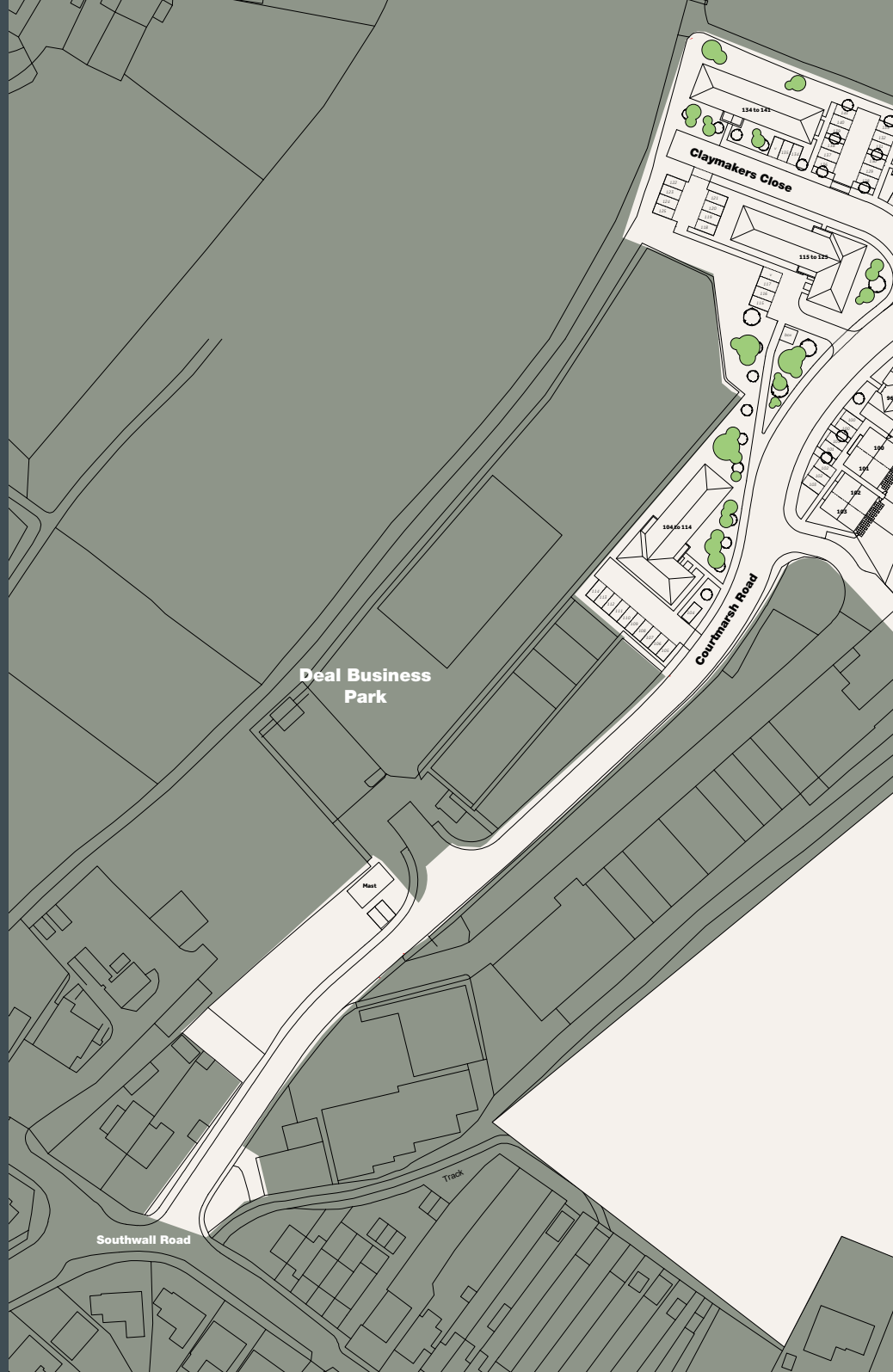
# Site Plan

-  The Tenterden II & III
-  The Sandwich
-  The Whitstable
-  The Hythe
-  The Faversham
-  The Cranbrook
-  The Dover II & III
-  The Swanley



Deal Train Station  
5 minute walk

Deal > London St Pancras  
1 hour and 21 minutes





Future Phase at Pottery Grove

Future Phase at Pottery Grove

Phase 1 Available Summer 2020

Phase 2 Available Summer 2021

Future Phase at Pottery Grove

Phase 2

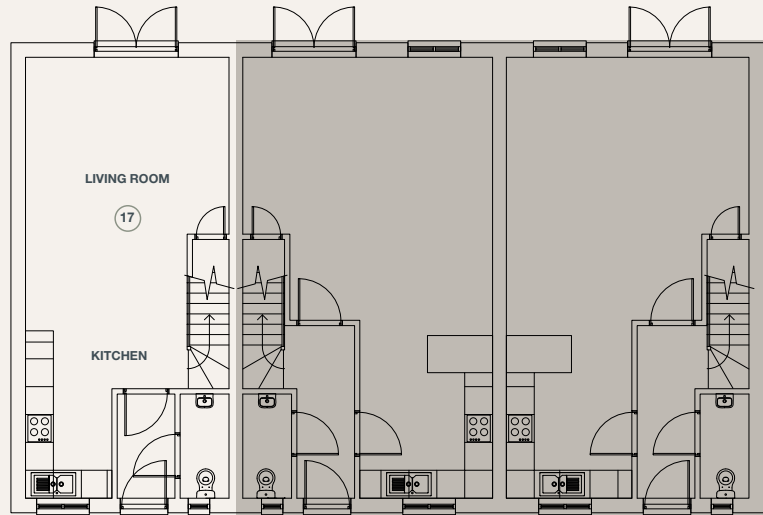
Albert Road leading to Deal Train Station and Town Centre

# The Tenterden III

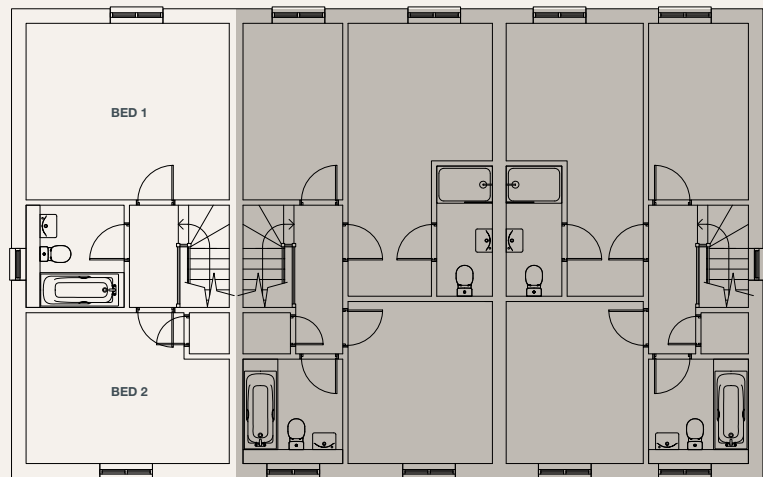
## The Tenterden II

2 Bedroom Homes

PLOTS: 17



GROUND FLOOR



FIRST FLOOR



Indicative Image of The Tenterden II at Pottery Grove

17

|                    |               |                   |
|--------------------|---------------|-------------------|
| <b>Kitchen</b>     | 1.86m x 3.83m | 6.10ft x 12.56ft  |
| <b>Living Room</b> | 4.38m x 5.66m | 14.37ft x 18.56ft |
| <b>Bedroom 1</b>   | 3.80m x 4.38m | 12.46ft x 14.37ft |

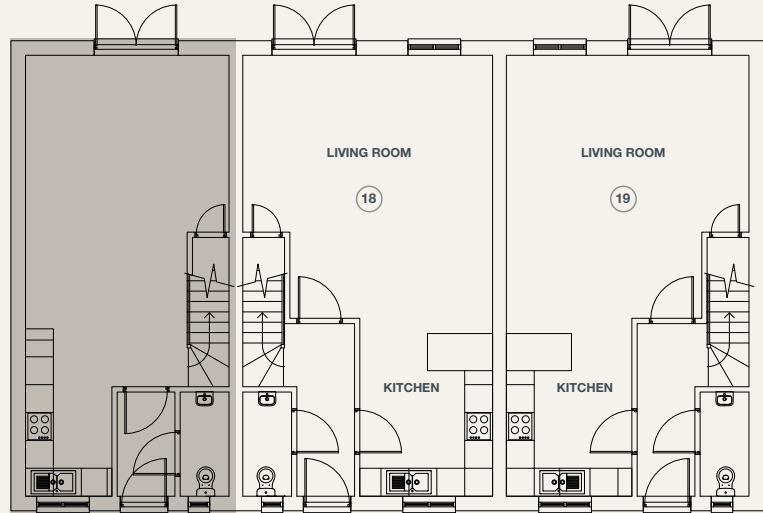
|                                 |               |                   |
|---------------------------------|---------------|-------------------|
| <b>Bedroom 2</b>                | 3.25m x 4.38m | 10.66ft x 14.37ft |
| <b>Total Area</b>               | 83.06 sq.m    | 894.05 sq.ft      |
| <b>Parking Spaces Available</b> | 1             |                   |

# The Tenterden III

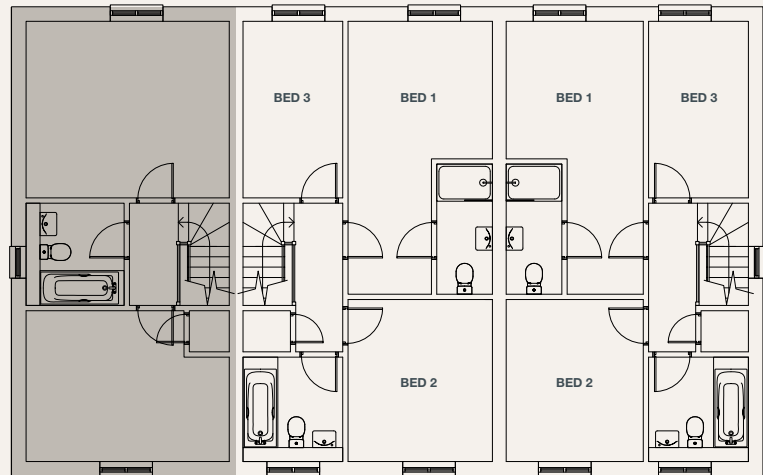
## The Tenterden III

3 Bedroom Homes

PLOTS: 18 19



GROUND FLOOR



FIRST FLOOR





Indicative Image of The Tenterden III at Pottery Grove

**Mid Terrace** <sup>18</sup>

|                    |               |                   |
|--------------------|---------------|-------------------|
| <b>Kitchen</b>     | 2.86m x 3.83m | 9.38ft x 12.56ft  |
| <b>Living Room</b> | 5.37m x 5.66m | 17.61ft x 18.56ft |
| <b>Bedroom 1</b>   | 3.11m x 5.88m | 10.20ft x 19.29ft |
| <b>Bedroom 2</b>   | 3.11m x 3.49m | 10.20ft x 11.45ft |

**End Terrace** <sup>19</sup>

|                    |               |                   |
|--------------------|---------------|-------------------|
| <b>Kitchen</b>     | 2.86m x 3.83m | 8.85ft x 12.56ft  |
| <b>Living Room</b> | 5.37m x 5.66m | 17.09ft x 18.57ft |
| <b>Bedroom 1</b>   | 3.11m x 5.88m | 9.67ft x 19.29ft  |
| <b>Bedroom 2</b>   | 3.11m x 3.49m | 9.67ft x 11.45ft  |

|                  |               |                  |
|------------------|---------------|------------------|
| <b>Bedroom 3</b> | 2.15m x 3.80m | 7.05ft x 12.46ft |
|------------------|---------------|------------------|

|                   |             |               |
|-------------------|-------------|---------------|
| <b>Total Area</b> | 102.01 sq.m | 1098.02 sq.ft |
|-------------------|-------------|---------------|

|                                 |   |
|---------------------------------|---|
| <b>Parking Spaces Available</b> | 2 |
|---------------------------------|---|

|                  |               |                  |
|------------------|---------------|------------------|
| <b>Bedroom 3</b> | 2.15m x 3.80m | 7.05ft x 12.46ft |
|------------------|---------------|------------------|

|                   |            |               |
|-------------------|------------|---------------|
| <b>Total Area</b> | 98.88 sq.m | 1064.98 sq.ft |
|-------------------|------------|---------------|

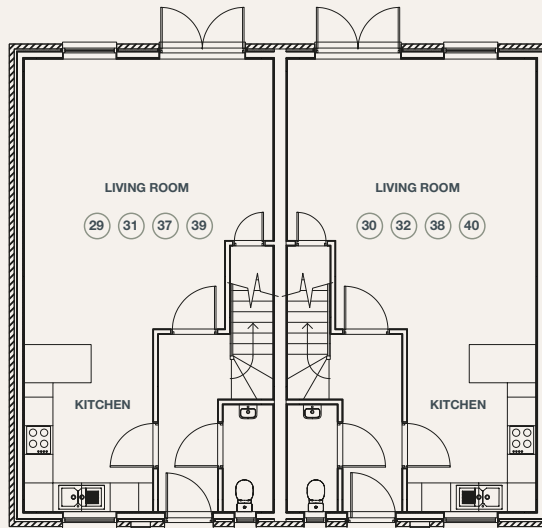
|                                 |   |
|---------------------------------|---|
| <b>Parking Spaces Available</b> | 2 |
|---------------------------------|---|

# The Sandwich

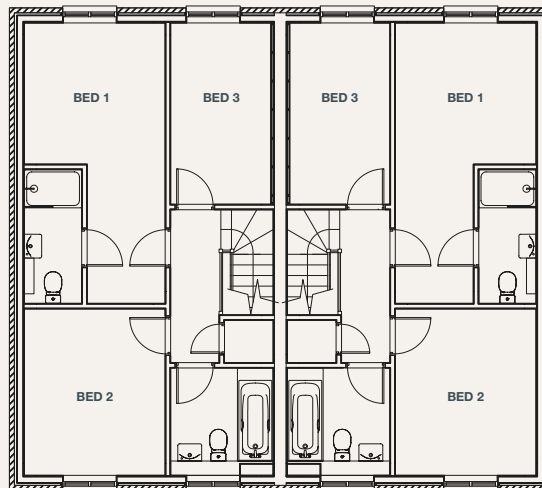
## The Sandwich

3 Bedroom Homes

PLOTS: 29 30 31 32 37 38 39 40



GROUND FLOOR



FIRST FLOOR



Indicative Image of The Sandwich at Pottery Grove

- 29
- 30
- 31
- 32
- 37
- 38
- 39
- 40

|                    |               |                   |
|--------------------|---------------|-------------------|
| <b>Kitchen</b>     | 2.70m x 3.83m | 8.85ft x 12.56ft  |
| <b>Living Room</b> | 5.21m x 5.66m | 17.09ft x 18.56ft |
| <b>Bedroom 1</b>   | 2.95m x 5.88m | 9.67ft x 19.29ft  |
| <b>Bedroom 2</b>   | 2.95m x 3.49m | 9.67ft x 11.45ft  |

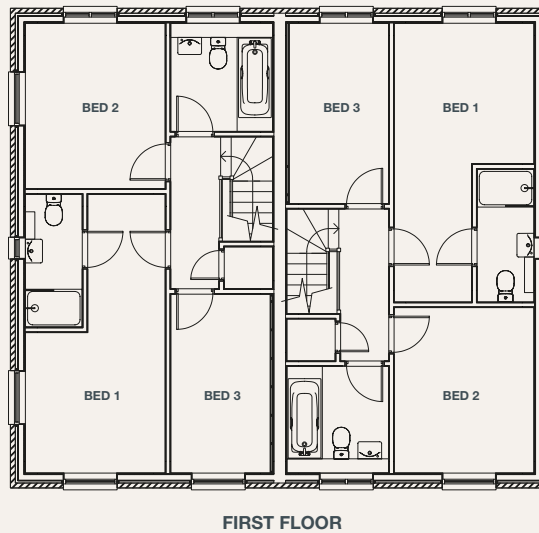
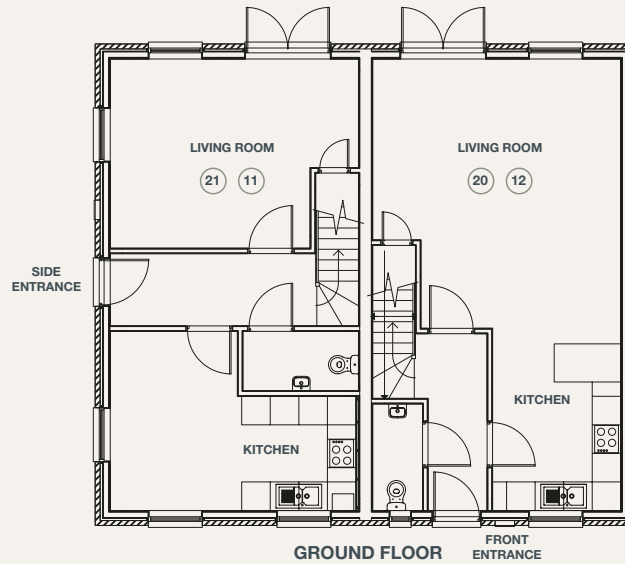
|                                 |               |                  |
|---------------------------------|---------------|------------------|
| <b>Bedroom 3</b>                | 2.15m x 3.80m | 7.05ft x 12.46ft |
| <b>Total Area</b>               | 98.94 sq.m    | 1064.98 sq.ft    |
| <b>Parking Spaces Available</b> | 2             |                  |

# The Whitstable

## The Whitstable

3 Bedroom Homes

PLOTS: 11 12 20 21





Indicative Image of The Whitstable at Pottery Grove

**Side Entrance** (11) (21)

|                    |               |                   |
|--------------------|---------------|-------------------|
| <b>Kitchen</b>     | 3.76m x 5.21m | 12.33ft x 17.09ft |
| <b>Living Room</b> | 3.98m x 5.21m | 13.05ft x 17.09ft |
| <b>Bedroom 1</b>   | 2.95m x 5.88m | 9.67ft x 19.29ft  |
| <b>Bedroom 2</b>   | 2.95m x 3.49m | 9.67ft x 11.45ft  |

**Front Entrance** (12) (20)

|                    |               |                   |
|--------------------|---------------|-------------------|
| <b>Kitchen</b>     | 2.70m x 3.83m | 8.85ft x 12.56ft  |
| <b>Living Room</b> | 5.21m x 5.66m | 17.09ft x 18.56ft |
| <b>Bedroom 1</b>   | 2.95m x 5.88m | 9.67ft x 19.29ft  |
| <b>Bedroom 2</b>   | 2.95m x 3.49m | 9.67ft x 11.45ft  |

|                  |               |                  |
|------------------|---------------|------------------|
| <b>Bedroom 3</b> | 2.15m x 3.77m | 7.05ft x 12.36ft |
|------------------|---------------|------------------|

|                   |            |               |
|-------------------|------------|---------------|
| <b>Total Area</b> | 98.94 sq.m | 1064.98 sq.ft |
|-------------------|------------|---------------|

|                                 |   |
|---------------------------------|---|
| <b>Parking Spaces Available</b> | 2 |
|---------------------------------|---|

|                  |               |                  |
|------------------|---------------|------------------|
| <b>Bedroom 3</b> | 2.15m x 3.77m | 7.05ft x 12.36ft |
|------------------|---------------|------------------|

|                   |            |               |
|-------------------|------------|---------------|
| <b>Total Area</b> | 98.94 sq.m | 1064.98 sq.ft |
|-------------------|------------|---------------|

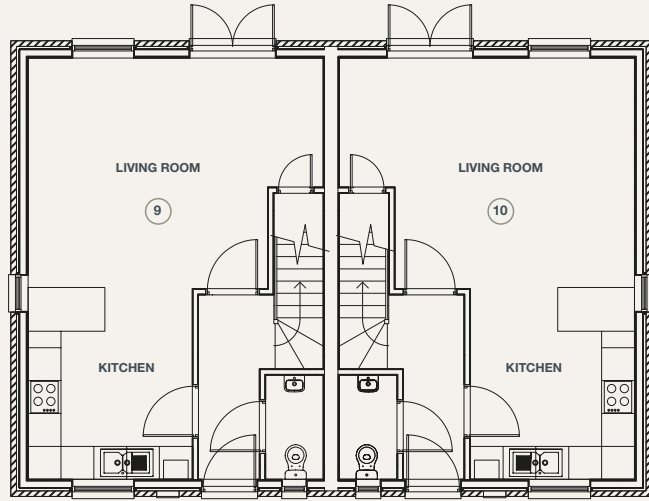
|                                 |   |
|---------------------------------|---|
| <b>Parking Spaces Available</b> | 2 |
|---------------------------------|---|

# The Hythe

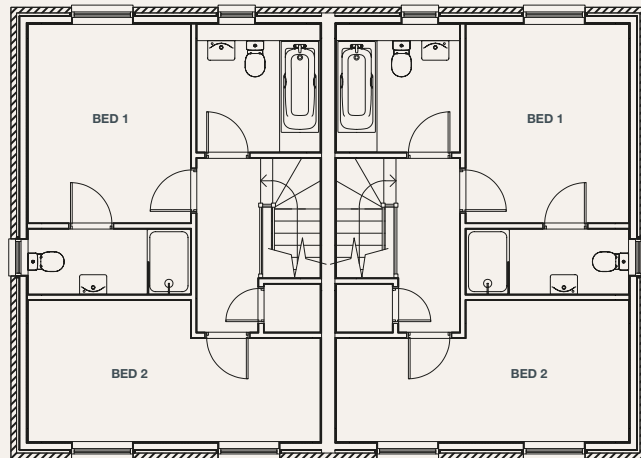
## The Hythe

2 Bedroom Homes

PLOTS: 9 10



GROUND FLOOR



FIRST FLOOR



Indicative Image of The Hythe at Pottery Grove

9 10

|                    |               |                   |
|--------------------|---------------|-------------------|
| <b>Kitchen</b>     | 3.0m x 3.50m  | 9.84ft x 11.48ft  |
| <b>Living Room</b> | 4.19m x 5.38m | 13.74ft x 17.65ft |
| <b>Bedroom 1</b>   | 3.0m x 3.66m  | 9.84ft x 12.00ft  |

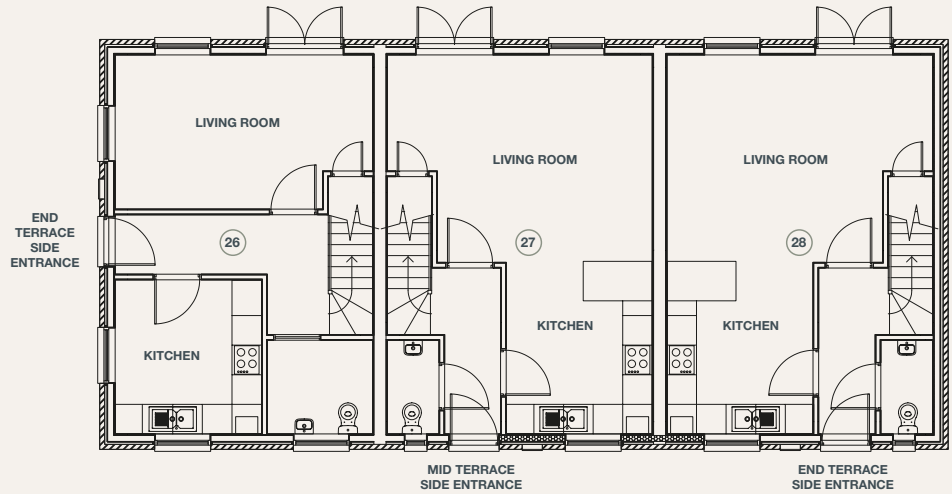
|                                 |               |                  |
|---------------------------------|---------------|------------------|
| <b>Bedroom 2</b>                | 5.38m x 2.60m | 17.65ft x 8.53ft |
| <b>Total Area</b>               | 82.78 sq.m    | 891 sq.ft        |
| <b>Parking Spaces Available</b> | 1             |                  |

# The Faversham

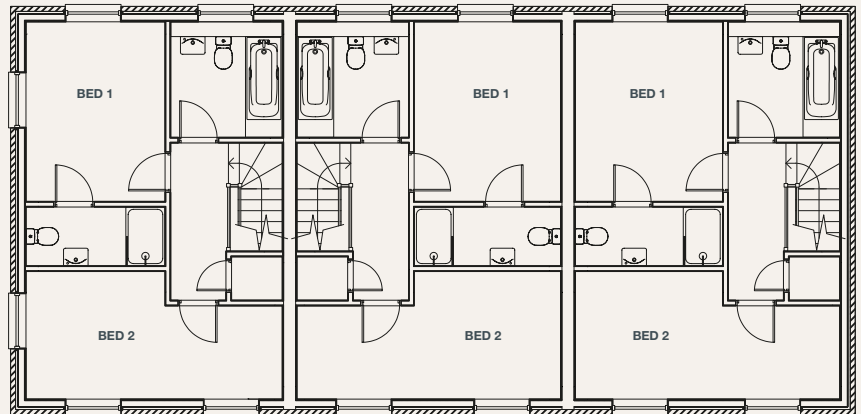
## The Faversham

2 Bedroom Homes

PLOTS: 26 27 28



GROUND FLOOR



FIRST FLOOR





Indicative Image of The Faversham at Pottery Grove

**End Terrace Side Entrance** <sup>(26)</sup>

|                    |               |                   |
|--------------------|---------------|-------------------|
| <b>Kitchen</b>     | 2.97m x 3.13m | 9.74ft x 10.26ft  |
| <b>Living Room</b> | 3.13m x 5.22m | 10.26ft x 17.12ft |
| <b>Bedroom 1</b>   | 2.83m x 3.66m | 9.28ft x 12.00ft  |

**Mid Terrace** <sup>(27)</sup>

|                    |               |                   |
|--------------------|---------------|-------------------|
| <b>Kitchen</b>     | 2.96m x 3.50m | 9.71ft x 11.48ft  |
| <b>Living Room</b> | 4.21m x 5.37m | 13.81ft x 17.61ft |
| <b>Bedroom 1</b>   | 2.99m x 3.66m | 9.80ft x 12.00ft  |

**End Terrace** <sup>(28)</sup>

|                    |               |                   |
|--------------------|---------------|-------------------|
| <b>Kitchen</b>     | 2.96m x 3.48m | 9.71ft x 11.41ft  |
| <b>Living Room</b> | 4.19m x 5.39m | 13.74ft x 17.68ft |
| <b>Bedroom 1</b>   | 3.0m x 3.66m  | 9.84ft x 12.00ft  |

|                  |               |                  |
|------------------|---------------|------------------|
| <b>Bedroom 2</b> | 2.60m x 5.22m | 8.53ft x 17.12ft |
|------------------|---------------|------------------|

|                   |            |              |
|-------------------|------------|--------------|
| <b>Total Area</b> | 80.27 sq.m | 864.01 sq.ft |
|-------------------|------------|--------------|

|                                 |   |
|---------------------------------|---|
| <b>Parking Spaces Available</b> | 1 |
|---------------------------------|---|

|                  |               |                  |
|------------------|---------------|------------------|
| <b>Bedroom 2</b> | 2.60m x 5.37m | 8.53ft x 17.61ft |
|------------------|---------------|------------------|

|                   |            |              |
|-------------------|------------|--------------|
| <b>Total Area</b> | 82.59 sq.m | 888.99 sq.ft |
|-------------------|------------|--------------|

|                                 |   |
|---------------------------------|---|
| <b>Parking Spaces Available</b> | 1 |
|---------------------------------|---|

|                  |              |                  |
|------------------|--------------|------------------|
| <b>Bedroom 2</b> | 2.6m x 5.39m | 8.53ft x 17.68ft |
|------------------|--------------|------------------|

|                   |            |           |
|-------------------|------------|-----------|
| <b>Total Area</b> | 82.87 sq.m | 892 sq.ft |
|-------------------|------------|-----------|

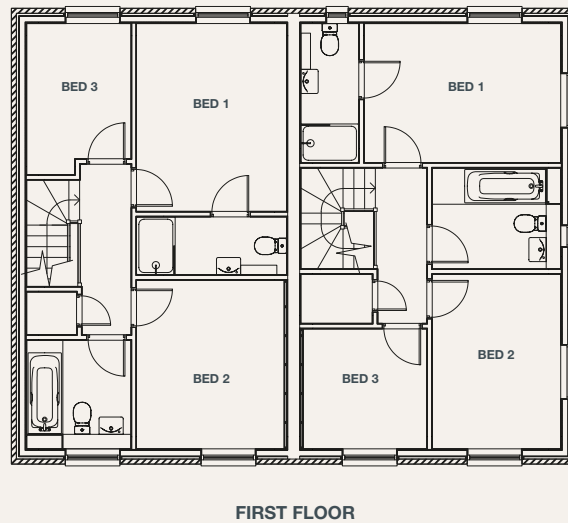
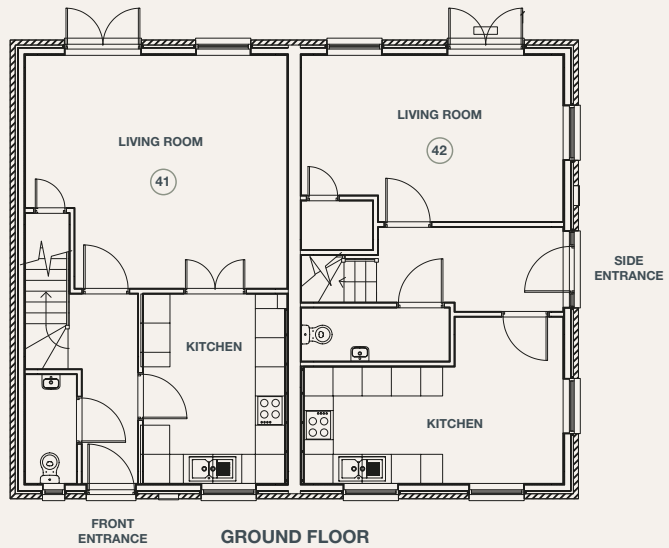
|                                 |   |
|---------------------------------|---|
| <b>Parking Spaces Available</b> | 1 |
|---------------------------------|---|

# The Cranbrook

## The Cranbrook

3 Bedroom Homes

PLOTS: 41 42





Indicative Image of The Cranbrook at Pottery Grove

**Front Entrance** 41

|                    |               |                   |
|--------------------|---------------|-------------------|
| <b>Kitchen</b>     | 2.96m x 3.90m | 9.71ft x 12.79ft  |
| <b>Living Room</b> | 4.8m x 5.38m  | 15.74ft x 17.65ft |
| <b>Bedroom 1</b>   | 3.11m x 3.89m | 10.20ft x 12.76ft |
| <b>Bedroom 2</b>   | 3.11m x 3.49m | 10.20ft x 11.45ft |

**Side Entrance** 42

|                    |               |                   |
|--------------------|---------------|-------------------|
| <b>Kitchen</b>     | 2.70m x 3.83m | 11.25ft x 17.65ft |
| <b>Living Room</b> | 5.21m x 5.66m | 11.25ft x 17.65ft |
| <b>Bedroom 1</b>   | 2.95m x 5.88m | 9.44ft x 13.32ft  |
| <b>Bedroom 2</b>   | 2.95m x 3.49m | 8.72ft x 11.84ft  |

|                  |               |                  |
|------------------|---------------|------------------|
| <b>Bedroom 3</b> | 2.16m x 3.13m | 7.08ft x 10.26ft |
|------------------|---------------|------------------|

|                   |            |               |
|-------------------|------------|---------------|
| <b>Total Area</b> | 94.85 sq.m | 1020.95 sq.ft |
|-------------------|------------|---------------|

|                                 |   |
|---------------------------------|---|
| <b>Parking Spaces Available</b> | 2 |
|---------------------------------|---|

|                  |               |                 |
|------------------|---------------|-----------------|
| <b>Bedroom 3</b> | 2.15m x 3.77m | 8.16ft x 8.56ft |
|------------------|---------------|-----------------|

|                   |            |               |
|-------------------|------------|---------------|
| <b>Total Area</b> | 94.85 sq.m | 1020.95 sq.ft |
|-------------------|------------|---------------|

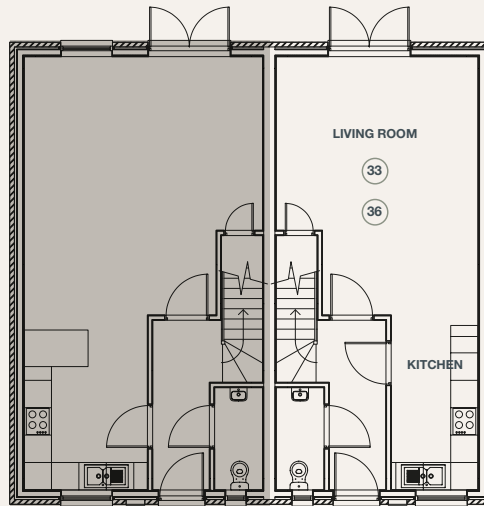
|                                 |   |
|---------------------------------|---|
| <b>Parking Spaces Available</b> | 2 |
|---------------------------------|---|

# The Dover II

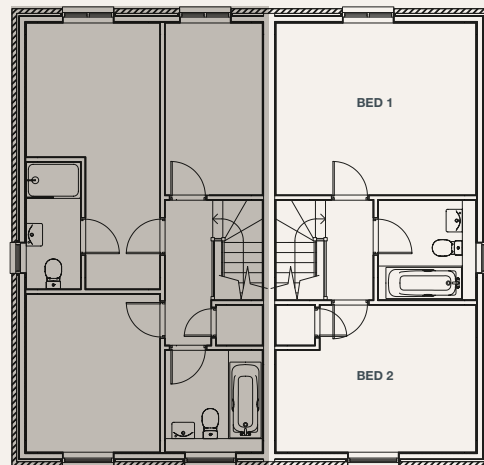
## The Dover II

2 Bedroom Homes

PLOTS: 33 36



GROUND FLOOR



FIRST FLOOR



Indicative Image of The Dover II at Pottery Grove

33 36

|                    |               |                   |
|--------------------|---------------|-------------------|
| <b>Kitchen</b>     | 1.90m x 3.83m | 6.23ft x 12.56ft  |
| <b>Living Room</b> | 4.42m x 5.66m | 14.50ft x 18.56ft |
| <b>Bedroom 1</b>   | 3.80m x 4.42m | 12.46ft x 14.50ft |

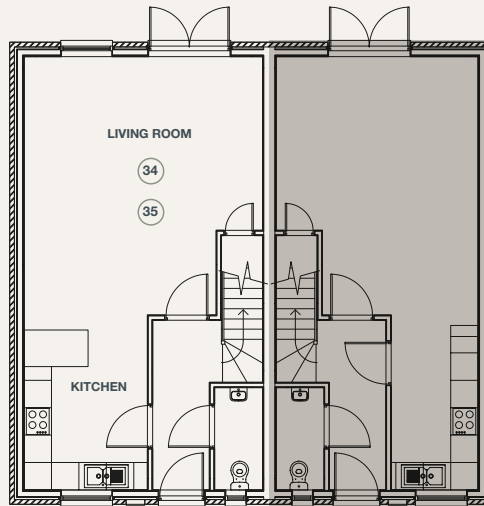
|                                 |               |                   |
|---------------------------------|---------------|-------------------|
| <b>Bedroom 2</b>                | 3.25m x 4.42m | 10.66ft x 14.50ft |
| <b>Total Area</b>               | 83.89 sq.m    | 902.98 sq.ft      |
| <b>Parking Spaces Available</b> | 1             |                   |

# The Dover III

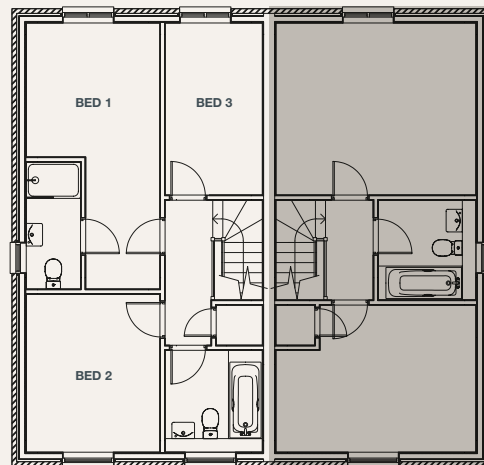
## The Dover III

3 Bedroom Homes

PLOTS: 34 35



GROUND FLOOR



FIRST FLOOR



Indicative Image of The Dover III at Pottery Grove

34 35

|                    |               |                   |
|--------------------|---------------|-------------------|
| <b>Kitchen</b>     | 2.70m x 3.83m | 8.85ft x 12.56ft  |
| <b>Living Room</b> | 5.21m x 5.66m | 17.09ft x 18.56ft |
| <b>Bedroom 1</b>   | 2.95m x 5.88m | 9.67ft x 19.29ft  |
| <b>Bedroom 2</b>   | 2.95m x 3.49m | 9.67ft x 11.45ft  |

**Bedroom 3** 2.15m x 3.80m 7.05ft x 12.46ft

**Total Area** 98.94 sq.m 1064.98 sq.ft

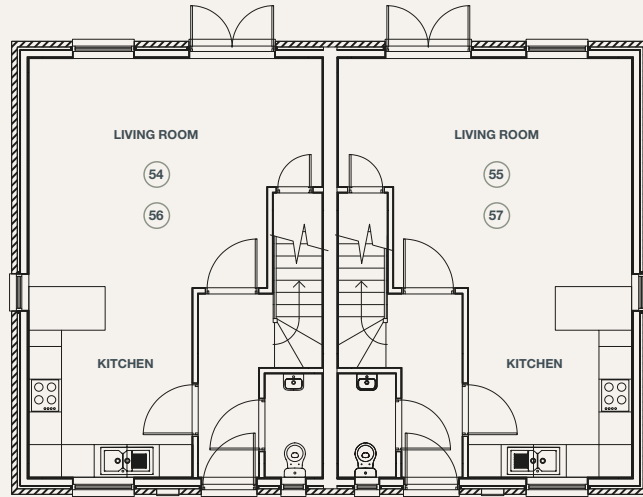
**Parking Spaces Available** 2

# The Swanley

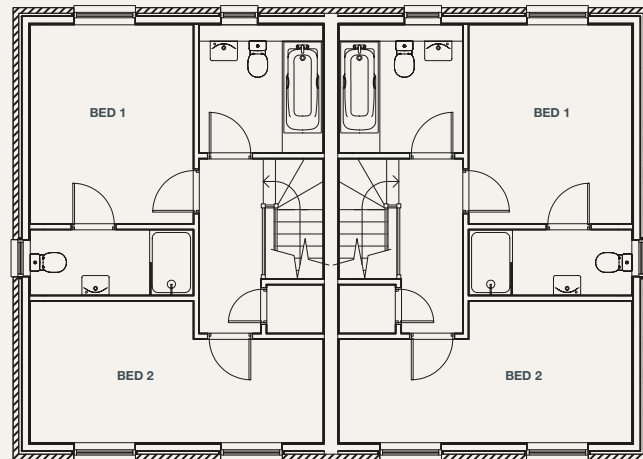
## The Swanley

2 Bedroom Homes

PLOTS: 54 55 56 57



GROUND FLOOR



FIRST FLOOR





Indicative Image of The Swanley at Pottery Grove

- 54
- 55
- 56
- 57

|                    |               |                   |
|--------------------|---------------|-------------------|
| <b>Kitchen</b>     | 2.99m x 3.48m | 9.80ft x 11.41ft  |
| <b>Living Room</b> | 4.21m x 5.38m | 13.81ft x 17.65ft |
| <b>Bedroom 1</b>   | 3.0m x 3.66m  | 9.84ft x 12.00ft  |

|                                 |               |                  |
|---------------------------------|---------------|------------------|
| <b>Bedroom 2</b>                | 2.60m x 5.38m | 8.53ft x 17.65ft |
| <b>Total Area</b>               | 82.78 sq.m    | 891.03 sq.ft     |
| <b>Parking Spaces Available</b> | 1             |                  |

# Specification



- A contemporary style, English-made kitchen with a one and a half bowl sink, all appliances by Bosch to include integrated fridge freezer, dishwasher, electric oven, ceramic hob, stainless steel chimney extractor with tiled splashback, stone worktop and porcelain floor tiles
- Contemporary style bathrooms with white Roca sanitaryware, vanity units, clear glass shower enclosure, designer taps, towel rails and large wall mirrors illuminated by down lighting and contemporary wall and floor tiling
- High-performance double-glazed windows
- High quality porcelain tiles fitted in the kitchen and hallway areas
- White painted doors with chrome levers and chrome hinges
- Recessed down lighters and pendants as appropriate
- Chrome light switches, sockets and telephone points in appropriate positions
- Television points in appropriate rooms and pre-wired for terrestrial/satellite TV



- Wall finished in a contemporary matte white paint with skirting, architraves and windows boards finished in a toning eggshell paint
- Mains wired smoke and heat detectors
- Fitted carpets to lounge areas, stairs, landings and bedrooms
- Home warranty insurance





E N G L I S H C H A N N E L

**NEARBY**

- Canterbury – 24 Miles
- Sandwich – 6 Miles
- Ramsgate – 14 Miles
- Dover – 8 Miles

**POTTERY GROVE**

Postcode for Sat Nav  
CT14 9JQ

# Quinn Homes

[www.quinn-homes.com](http://www.quinn-homes.com)

*Wards*  
Land & New Homes

**All sales enquiries contact:**

**01304 361 420 | [deal@wardsofkent.co.uk](mailto:deal@wardsofkent.co.uk)**

DISCLAIMER: The information in this document is indicative and is intended to act as a guide only as to the finished product. Accordingly, due to Quinn Homes policy of continuous improvement, the finished product may vary from the information provided. These particulars should not be relied upon as statements of fact or representations and applicants must satisfy themselves by inspection or otherwise as to their correctness. This information does not constitute a contract or warranty. Pottery Grove is a marketing name and will not necessarily form part of the approved postal address. Applicants are advised to contact Quinn Homes to ascertain the availability of any particular property. Computer-generated images and photography are indicative only and subject to change. The Pottery Grove site plan is indicative only and subject to change. In line with our policy of continuous improvement we reserve the right to alter the layout, building style, landscaping and specification at anytime without notice. Floorplans shown for Pottery Grove are for approximate measurements only. Exact layouts and sizes may vary. All measurements may vary within a tolerance of 5%. The dimensions are not intended to be used for carpet sizes, appliance sizes or items of furniture. Your attention is drawn to the fact that it may not be possible to provide the branded products as referred to in the specification. In such cases, a similar alternative will be provided. Quinn Homes reserves the right to make these changes as required. A number of choices and options are available to personalise your home. Choices and options are subject to timeframes, availability and change. Maps are not to scale and show approximate locations only. Through the purchase of a property at Pottery Grove, the buyer is acquiring an apartment with a 999 year leasehold with associated rights to use the communal areas as set out in the lease. Houses are acquired on a freehold basis.