



POTTERY GROVE

• DEAL •

CLAYMAKER'S CLOSE

Quinn
Homes



Deal Seafront and Pier

A Gem of Coast and Country

Deal is where you want to be with a stunning coastline on one side and Kent's rolling fields on the other. Excellent transport links from HS1, where trains take just 1 hour and 21 minutes to reach London St Pancras.

At Pottery Grove, an exquisite collection of stylish homes, you are well catered for by a town with an award-winning high street and excellent transport links.

With a selection of 2 & 3 bedroom homes, each with a contemporary finish, it is time to make Deal your new home for an exceptional lifestyle.

Deal

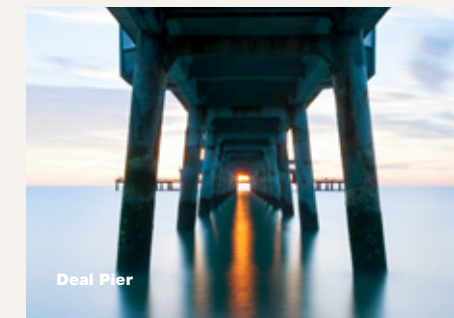
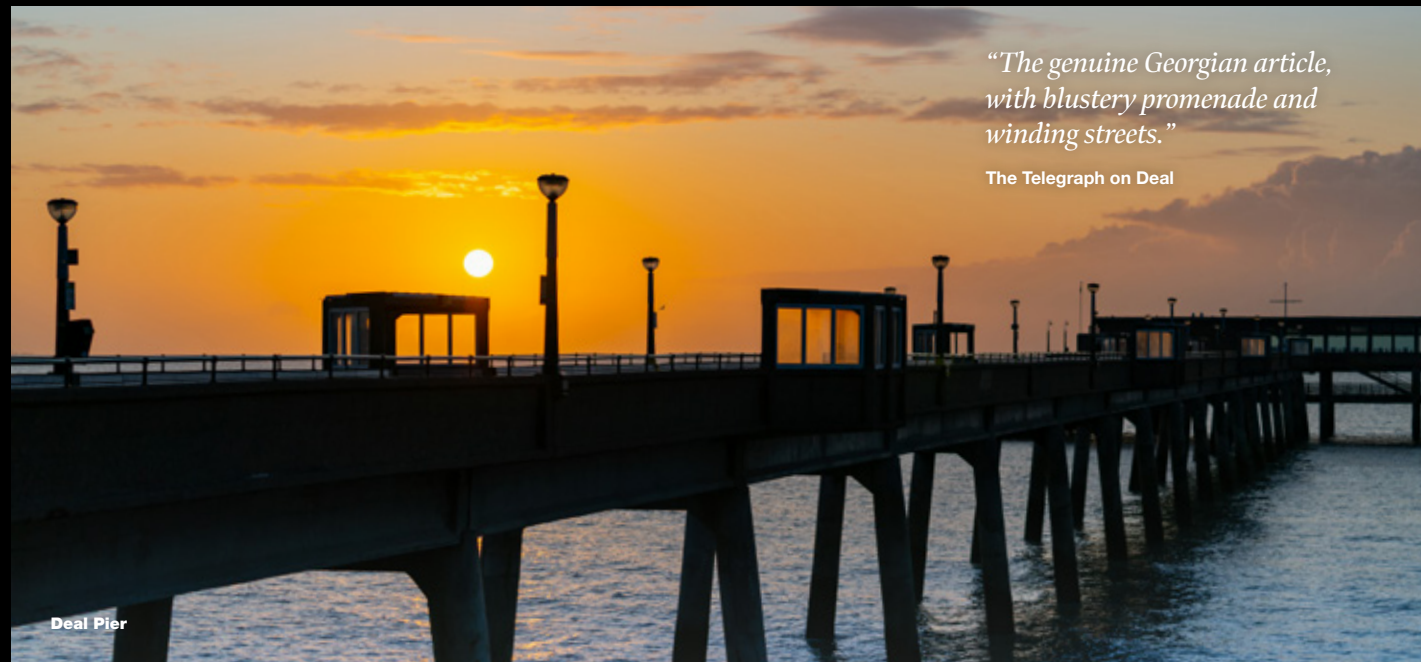
Full of Life

Deal is regarded as one of Kent's most vibrant seaside towns with many choosing to embrace the lifestyle it has to offer.

With the high street voted as Britain's best by The Telegraph, the varied mix of restaurants and quirky retail outlets, Deal has a rarely found character.

Deal is home to two of the country's finest castles and major tourist attractions with Deal Castle, built by Henry VIII and Walmer Castle. The latter also boasts a sensational gardens complex looking out onto the English Channel.

Off the coast lies the Goodwin Sands, notorious for the sinking of hundreds of vessels over the centuries and now home to a colony of seals. The waters off Deal separate the English Channel from the North Sea and history has provided exceptional tales of smuggling, shipwrecks and invasion.



Deal Awards

'One of the best places to live'
- The Times 2022

The Telegraph voted Deal first in the '10 top spots to lay your beach towel'

'Best Places to Live'
- The Sunday Times

'Top 30 places to live by the sea' - The Sunday Times

'Top Hipster Holiday'
- Evening Standard

'High Street of the Year'
- The Daily Telegraph



Betteshanger Country Park



The Lamp Room Kitchen + Bar at Betteshanger Country Park

Out & About

**Whatever your age or interests,
Deal has everything to offer.**

Betteshanger Park is an exciting addition to the town providing outdoor activities, year-round events and a range of cultural opportunities. With excellent connectivity to the town and surrounding area, the park is an exceptional place for all the family and is located just 3 miles from Pottery Grove.



Royal Cinque Ports Golf Club

The Dover district has an abundance of outstanding schools including Dover Grammar School For Boys and the Ofsted Outstanding schools of Dover Grammar School For Girls and Sir Roger Manwood's in Sandwich. In addition, Deal has a range of primary schools and prep schools including Northbourne Park.

Deal has a leisure centre, tennis clubs, internationally renowned golf courses and with Deal & Betteshanger Rugby Club and Deal Football Club, opportunities exist for sporting excellence for all age groups.



Quinn Homes

Quinn Homes are one of Kent's leading developers of outstanding new homes.

With 25 years experience, Quinn Homes have consistently delivered exemplary projects across the county.

As part of our ethos, we support the communities in which we develop, funding local projects and providing new facilities.



Each new home is built to exacting standards and signed off by a director of Quinn Homes to ensure that the pride our experienced and professional team have is reflected in all we do.

Quinn Homes are committed to industry leading levels of aftercare backed by a building warranties demonstrating our commitment to you and your new home.



Evening Standard New Homes Awards 2021

Awarded for Best Family Home



Best Small Housebuilder

Winner



Best Small Housebuilder

Winner

Site Plan



The Tenterden I, II & III

Plots: 104 / 105 / 106
2 & 3 Bedrooms



The Sandwich

Plots: 107 / 108
3 Bedrooms



The Chillenden

Plots: 109 / 110 / 111 / 112 / 113
114 / 117 / 118
3 Bedrooms



The Dover III

Plots: 115 / 116
3 Bedrooms



The Alkham I, II, III, IV & V

Plots: 119 / 120 / 121 / 122 / 123
2 & 3 Bedrooms



Deal Train Station
5 minute walk

Deal > London St Pancras
1 hour and 21 minutes



*“Deal is one of the
best places to live”*

The Times

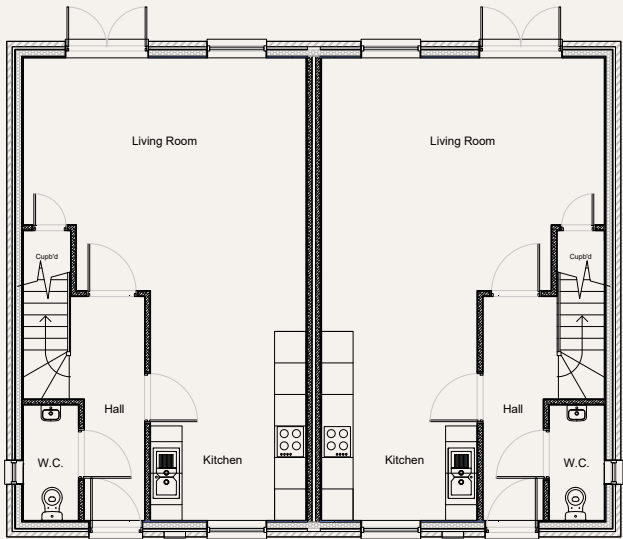


The Chillenden

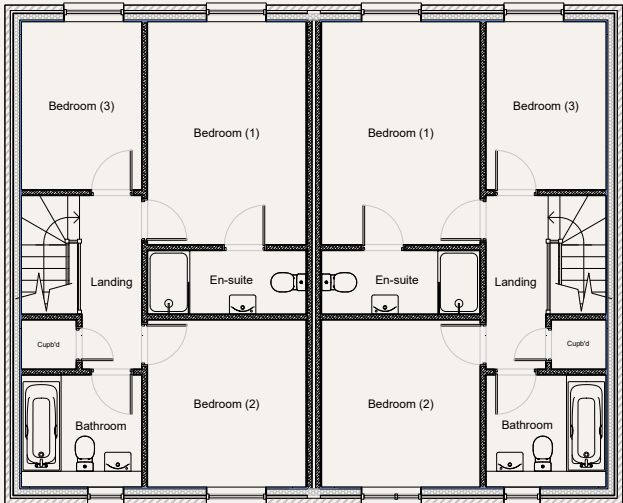
The Chillenden

3 Bedrooms

PLOTS: 109 110 111 112 113 114 117 118



GROUND FLOOR



FIRST FLOOR



Indicative image of The Chillenden at Pottery Grove

109 110 111 112 113 114 117 118

Kitchen	3.000 (9'10") x 4.289 (14'0")
Living	5.425 (17'9") (max) x 4.547 (14'11")
WC	1.075 (3'6") x 2.225 (7'3")
Bedroom 1	4.245 (13'11") x 3.038 (9'11")
Ensuite	1.225 (4'0") x 3.038 (9'11")

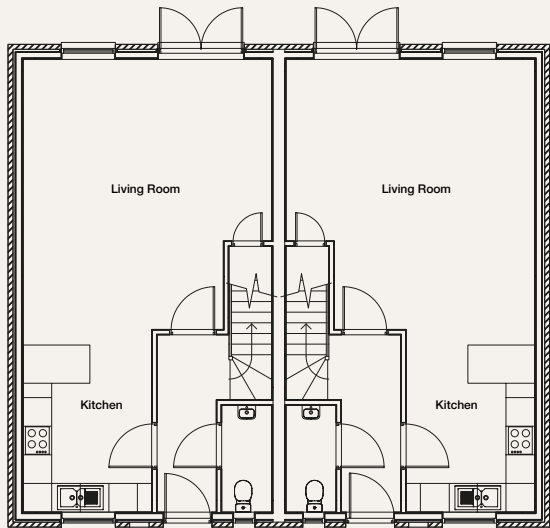
Bedroom 2	3.188 (10'5") x 3.038 (9'11")
Bathroom	2.299(7'6") x 2.147 (7'0")
Bedroom 3	2.311 (7'6") x 3.204 (10'6")
Parking Spaces	2
Total Area	1,022 sq.ft

The Sandwich

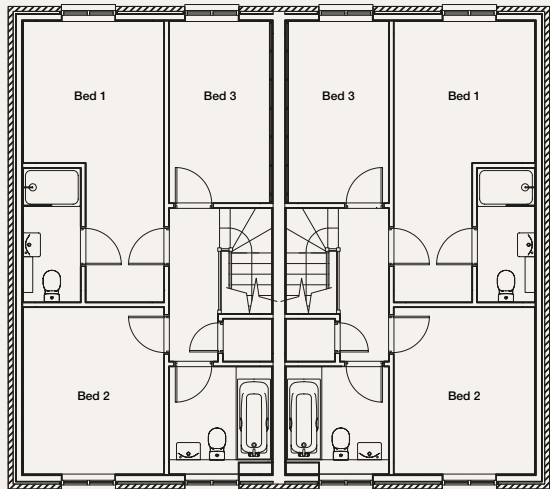
The Sandwich

3 Bedrooms

PLOTS: 107 108



GROUND FLOOR



FIRST FLOOR



Indicative Image of The Sandwich at Pottery Grove

107

108

Kitchen	2.70m (8'8") x 3.83m (12'6")
Living Room	5.21m (17') x 5.66m (18'6")
WC	1m (3'3") x 2.2m (7'2")
Bedroom 1	2.95m (9'7") x 5.88m (19'3")
Ensuite	1.2m (3'11") x 2.5m (8'2")

Bedroom 2	2.95m (9'7") x 3.49m (11'5")
Bedroom 3	2.15m (7') x 3.80m (12'5")
Parking Spaces	2
Total Area	1065 sq.ft

The Tenterden I, II & III

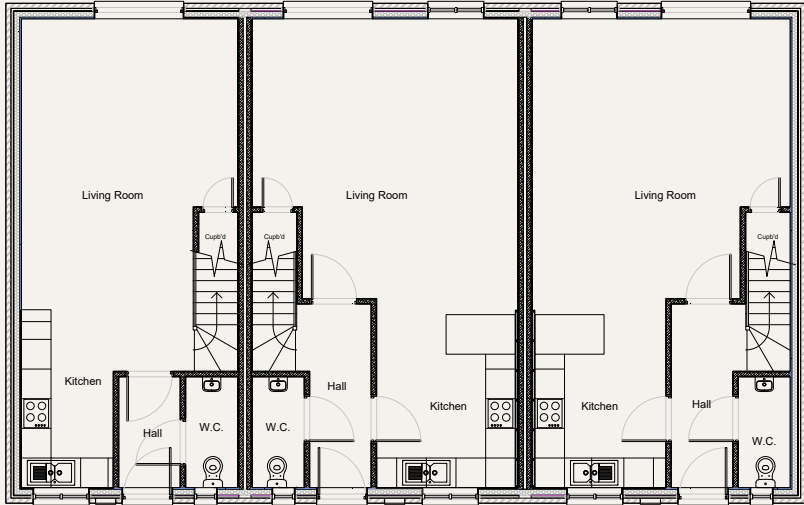
2 & 3 Bedrooms

PLOT:

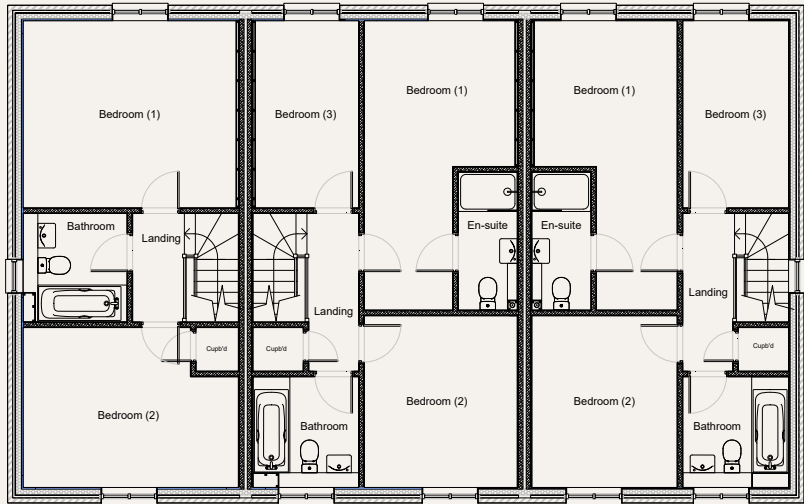
104

105

106



GROUND FLOOR



FIRST FLOOR



104

Living	4.459m (14'7") (max) x 5.772m (18'11")
Kitchen	1.883m (6'2") x 3.379m (11'1")
WC	1.088 (3'6") x 2.266 (7'5")
Bedroom 1	3.829m (12'6") x 4.414m (14'5")

Bathroom	2.229m (7'3") x 2.137m (7'0")
Bedroom 2	3.275m (10'8") (max) x 4.414m(14'5")
Parking Spaces	2
Total Area	894 sq.ft

105

Living	2.893m (9'5") x 3.739m (12'3")
Kitchen	5.424m (17'9") (max) x 5.772m (18'11")
WC	1.088m (3'6")x 2.266m (7'5")
Bedroom 1	3.148m (10'3") (max) x 5.906m (19'4")
Ensuite	1.238m (4'0") x 2.829m (9'3")

Bedroom 2	3.148m (10'3") x 3.516m (11'6")
Bathroom	2.275m (7'5") x 2.188m (7'2")
Bedroom 3	3.829 (12'6") x 2.187m (7'2")
Parking Spaces	2
Total Area	1,098 sq.ft

106

Living	2.725m (8'11") x 3.739m (12'3")
Kitchen	5.256m (17'2") (max) x 5.772m (18'11")
WC	1.088m (3'6") x 2.266m (7'5")
Bedroom 1	2.992m (9'9") (max) x 5.906m (19'4")
Ensuite	1.238m (4'0") x 2.829m (9'3")

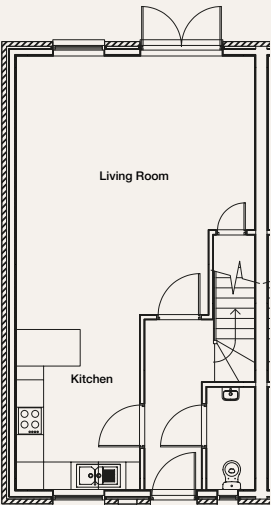
Bedroom 2	3.516m (11'6") x 2.992m (9'9")
Bathroom	2.275m (7'5") x 2.175m (7'1")
Bedroom 3	3.829 (12'6") x 2.175m (7'1")
Parking Spaces	2
Total Area	1,065 sq.ft

The Dover III

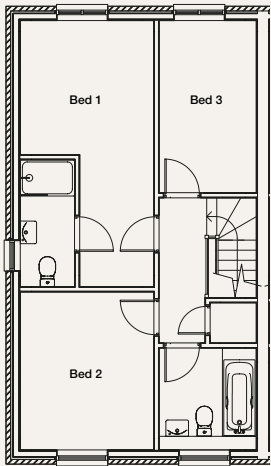
The Dover III

3 Bedrooms

PLOTS: 115 116



GROUND FLOOR



FIRST FLOOR



Indicative Image of The Dover III at Pottery Grove

115

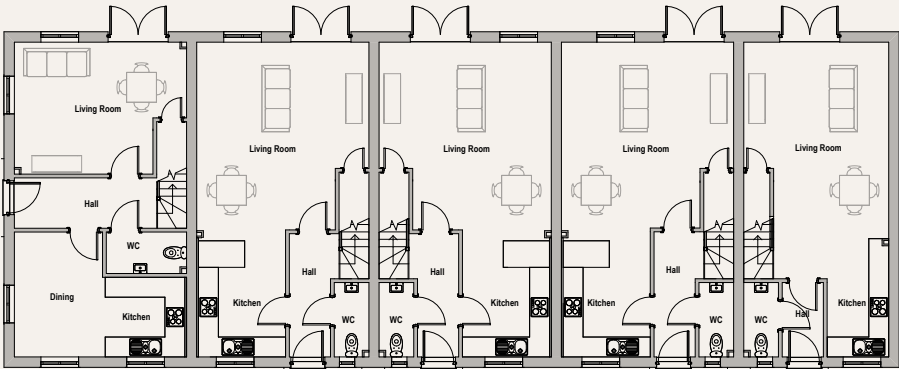
116

Kitchen	2.70m x 3.83m	8.85ft x 12.56ft
Living Room	5.21m x 5.66m	17.09ft x 18.56ft
Bedroom 1	2.95m x 5.88m	9.67ft x 19.29ft
Bedroom 2	2.95m x 3.49m	9.67ft x 11.45ft

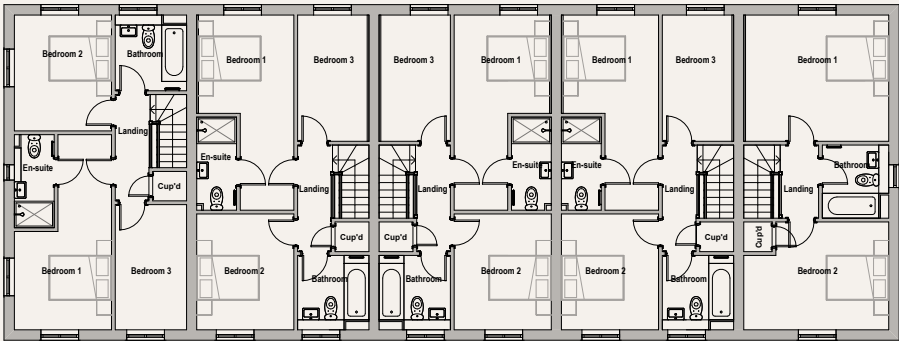
Bedroom 3	2.15m x 3.80m	7.05ft x 12.46ft
Parking Spaces	2	
Total Area	98.94 sq.m	1065 sq.ft

The Alkham I, II, III, IV & V 2 & 3 Bedrooms

PLOTS: 119 120 121 122 123



GROUND FLOOR



FIRST FLOOR



Indicative Image of The Alkham I, II, III, IV & V at Pottery Grove

120 121 122 123

Kitchen	2.70m x 3.83m	8.85ft x 12.56ft
Living Room	5.21m x 5.66m	17.09ft x 18.56ft
Bedroom 1	2.95m x 5.88m	9.67ft x 19.29ft
Bedroom 2	2.95m x 3.49m	9.67ft x 11.45ft

119

Kitchen	1.90m x 3.83m	6.23ft x 12.56ft
Living Room	4.42m x 5.66m	14.50ft x 18.56ft
Bedroom 1	3.80m x 4.42m	12.46ft x 14.50ft

Bedroom 3	2.15m x 3.80m	7.05ft x 12.46ft
Parking Spaces	2	
Total Area	98.94 sq.m	1066 sq.ft

Bedroom 2	3.25m x 4.42m	10.66ft x 14.50ft
Parking Spaces	1	
Total Area	83.89 sq.m	893 sq.ft

Specification



KITCHENS

- Contemporary designed kitchen with fitted wall and base units
- Soft close hinges to cabinet doors
- Stainless steel sink
- Integrated electric oven, induction hob and extractor
- Integrated microwave oven
- Natural stone quartz worktops and full height splashbacks
- Integrated fridge/ freezer
- Integrated dishwasher
- Integrated washer/dryer
- Low voltage recessed downlights to kitchen area
- Under pelmet feature lighting
- Tiled floor
- Appliances by Bosch and Hoover

BEDROOMS

- Fully fitted carpet TV/FM and telecom point (master bedroom only)
- Downlights

BATHROOMS / ENSUITES

- Glass shower screen
- Designer taps and thermostatic shower mixer unit
- Full height large format Porcelanosa ceramic tiling
- Low voltage recessed downlights
- Shaver socket in bathroom
- Extractor ventilation
- Heated towel rail
- Sanitaryware by Roca

LIVING AREA

- High quality laminate
- Media plate providing TV/FM aerial, telecom, satellite and power points

EXTERNAL FINISHES

- Rear garden turfed with patio area
- Fully fenced to all sides
- Outside light and tap point

INTERIOR FINISHES

- White finished internal doors
- Polished chrome door furniture
- White painted feature profile skirting and architraves
- Matt emulsion paint finish to walls and ceilings

SECURITY

- Entrance door with spyhole and 5 lever deadlock
- Mains supply smoke and heat detector/s

WARRANTIES

- Each house is backed by a 10-year insurance backed building defects guarantee



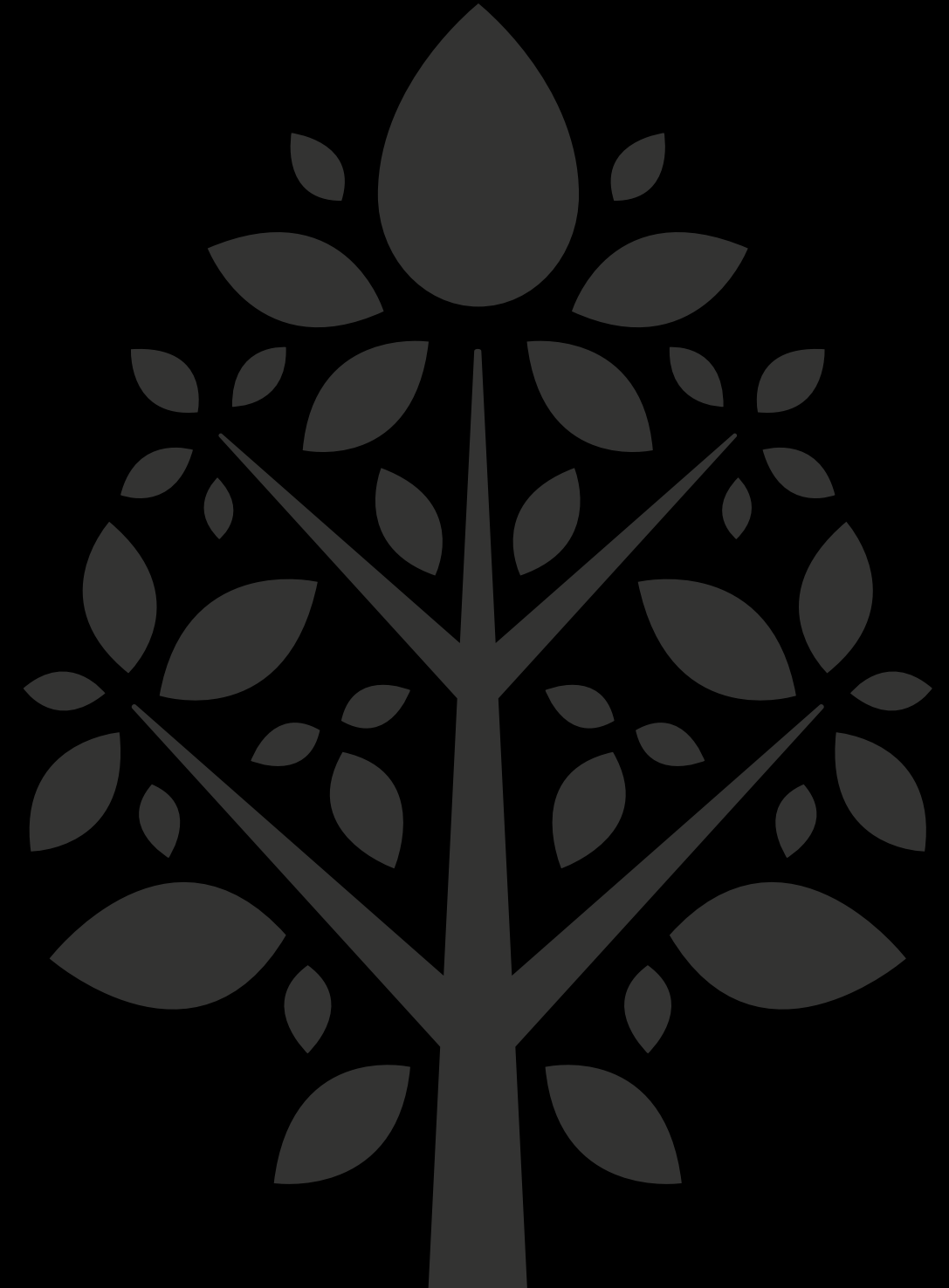
E N G L I S H C H A N N E L

NEARBY

Canterbury – 24 Miles
Sandwich – 6 Miles
Ramsgate – 14 Miles
Dover – 8 Miles

POTTERY GROVE

Postcode for Sat Nav
CT14 9JQ





POTTERY
GROVE

- DEAL -

Quinn
Homes

www.quinn-homes.com

quinnhomes@quinn-homes.com

DISCLAIMER: The information in this document is indicative and is intended to act as a guide only as to the finished product. Accordingly, due to Quinn Homes policy of continuous improvement, the finished product may vary from the information provided. These particulars should not be relied upon as statements of fact or representations and applicants must satisfy themselves by inspection or otherwise as to their correctness. This information does not constitute a contract or warranty. Claymaker's Close is a marketing name and will not necessarily form part of the approved postal address. Applicants are advised to contact Quinn Homes to ascertain the availability of any particular property. Computer-generated images and photography are indicative only and subject to change. The Claymaker's Close site plan is indicative only and subject to change. In line with our policy of continuous improvement we reserve the right to alter the layout, building style, landscaping and specification at any time without notice. Floorplans shown for Claymaker's Close are for approximate measurements only. Exact layouts and sizes may vary. All measurements may vary within a tolerance of 5%. The dimensions are not intended to be used for carpet sizes, appliance sizes or items of furniture. Your attention is drawn to the fact that it may not be possible to provide the branded products as referred to in the specification. In such cases, a similar alternative will be provided. Quinn Homes reserves the right to make these changes as required. A number of choices and options are available to personalise your home. Choices and options are subject to timeframes, availability and change. Maps are not to scale and show approximate locations only. Houses are acquired on a freehold basis